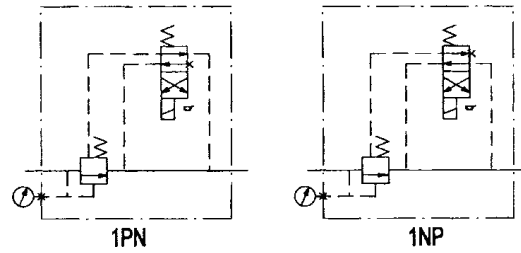




閥類型符號 SYMBOL

HSRF-※



規格說明 SPECIFICATION

型式 MODE	最高使用壓力 MAX. OPERATING PRESSURE (kgf/cm ²)	壓力調整範圍 PRESSURE ADJ. RANGE kgf/cm ²	流量 RATED FLOW l/min	重量(不含電磁閥) WEIGHT (No CONTAIN ELECTRO MAGNETIC VALVE) (kg)
HSRF-G03	250	1 : 7-70	100	4.8
HSRF-G06		2 : 7-140	200	6.0
HSRF-G10		3 : 7-210	400	9.8

型號說明 HOW TO ORDER :

HSRF-G 03-1PN-1-R-A220-10

- ① ② ③ ④ ⑤ ⑥ ⑦ ⑧

- ① **低噪音型電磁控制溢流閥**
NOISE TYPE SOLENOID CONTROL RELIEF VALVE
- ② **安裝方式 MOUNTING**
G : 版式安裝
SUB-PLATE MOUNTING
- ③ **閥規格 VAVLE SIZE**
03 : 3/8" 06 : 3/4" 10 : 1-1/4"
- ④ **導閥型式 VAVLE TYPE**
1PN : 常開式 NORMALLY VENTED
1NP : 常閉式 ENERGIZED TO VENT
- ⑤ **調壓範圍 PRESSURE ADJUSTING RANGE**
1 : 7 - 70 kgf/cm² 2 : 7 - 140 kgf/cm²
3 : 7 - 210 kgf/cm²
- ⑥ **調整把手方向 DIRECTION OF KNOB**
R : 右 P 口側標準型 RIGHT (P PORT SIDE STANDARD)
L : 左 T 口側 LEFT (T PORT SIDE)
- ⑦ **線圈電壓 COIL VOLTAGE**
D12 : 12V DC D24 : 24V DC
A110 : 110/60Hz A220 : 220/60Hz A240 : 240/60Hz
- ⑧ **導閥接線方式 VAVLE DESIGN NUMBER**
10 : 帶燈的集中連接盒 WITH LAMP CENTRAL CONNECTION
20 : 插入式接頭帶密封套 PLUG-IN CONNECTION

附屬品 ATTACHMENT

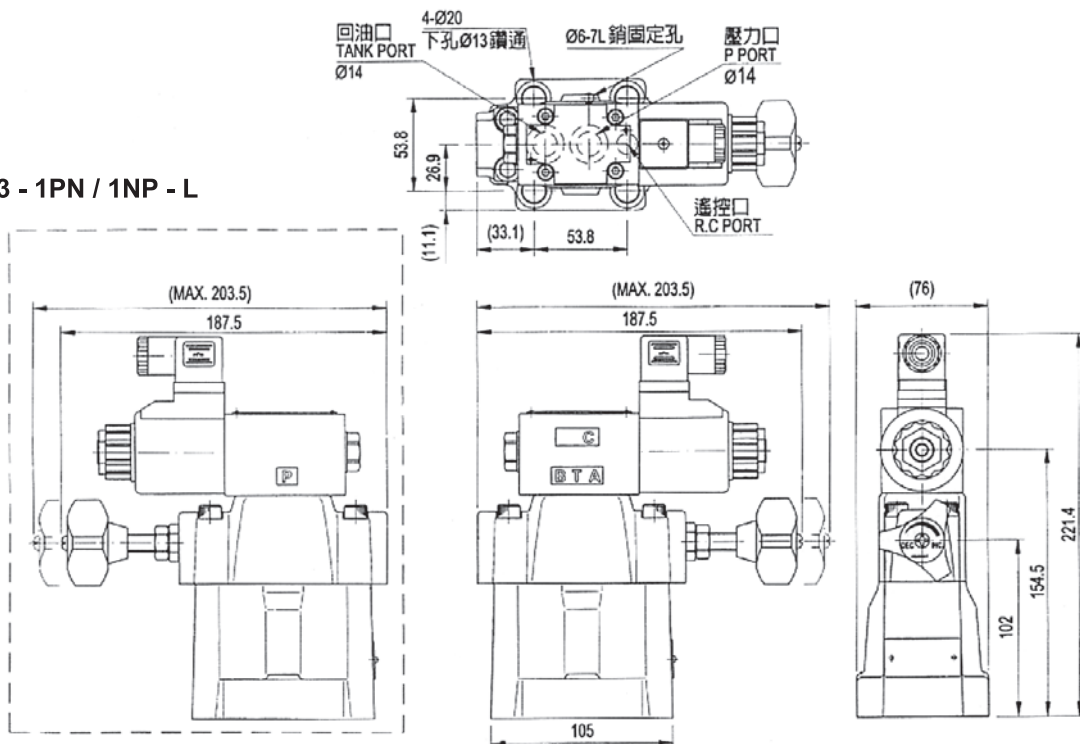
型式 MODLE	安裝螺絲 SOC HOL CAP SCREW
HSRF-G03	M12 × 40L.....2pcs
HSRF-G06	M16 × 50L.....2pcs
HSRF-G10	M20 × 65L.....2pcs

SWH-G02 電磁閥重量 SOLENOID WEIGHT(kg)		
	AC	DC
帶一個電磁鐵 Single solenoid valve	1.6	1.7
帶一個電磁鐵 Single solenoid valve	2.1	2.1

安裝尺寸 INSTALLATION DIMENSIONS

HSRF - G03 - 1PN / 1NP-R

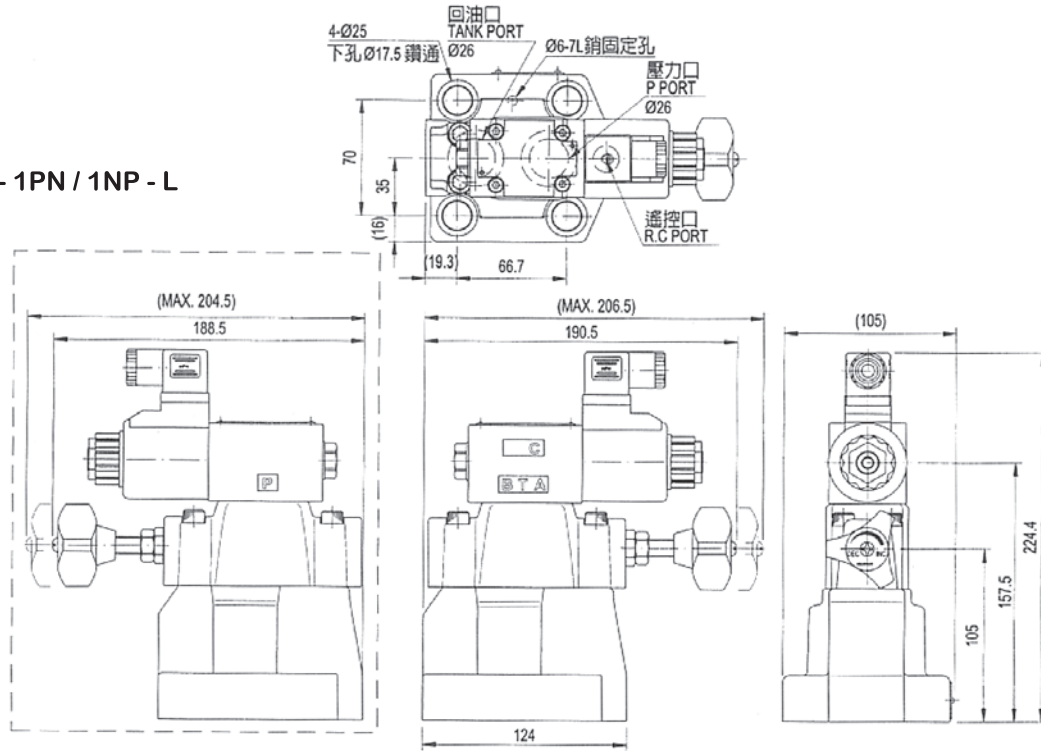
HSRF - G03 - 1PN / 1NP - L



安裝尺寸 INSTALLATION DIMENSIONS

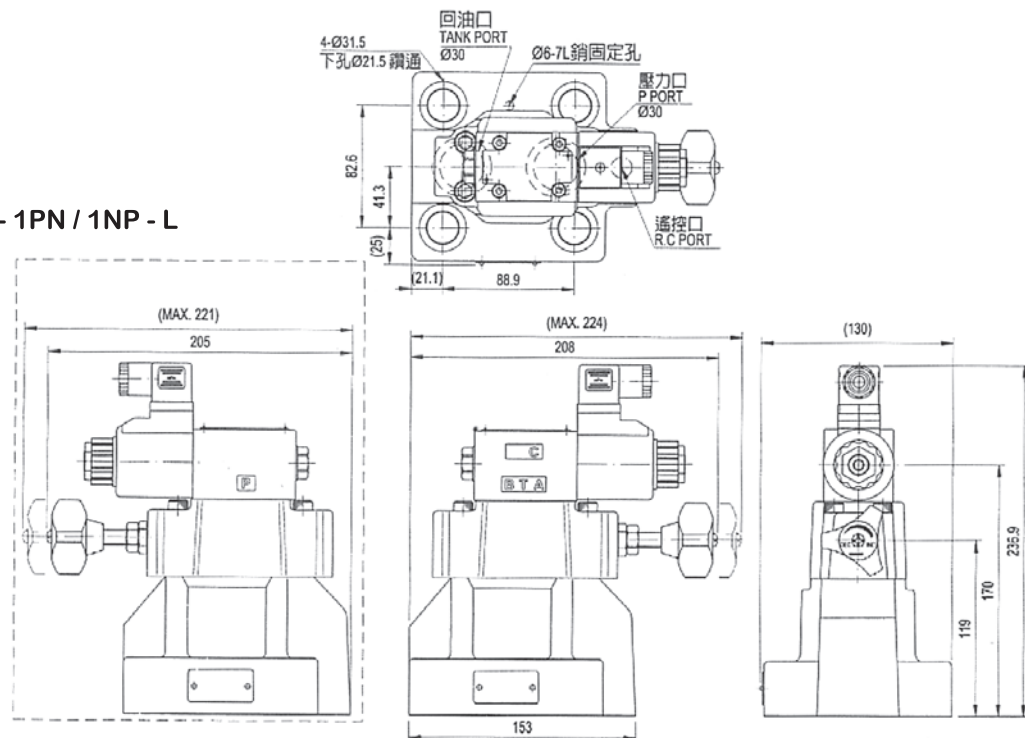
HSRF - G06 - 1PN / 1NP - R

HSRF - G06 - 1PN / 1NP - L



HSRF - G10 - 1PN / 1NP - R

HSRF - G10 - 1PN / 1NP - L



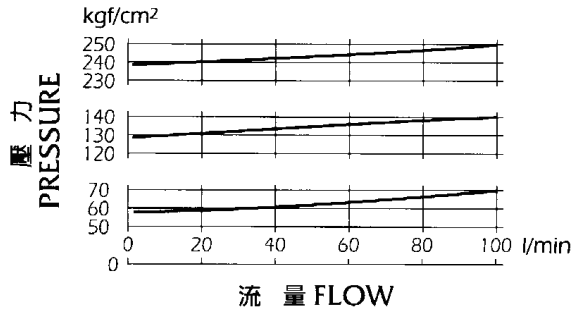
測試條件 PERFORMANCE CURVES

單位 UNIT : mm

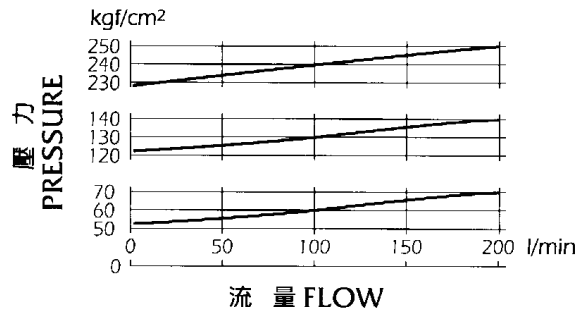
測試油黏度 TEST FLUID VISCOSITY :35 cST

測試油溫度 TEST TEMPERATURE : 50°C

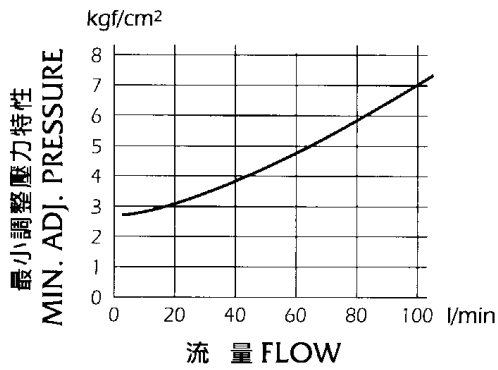
HRF - G03 · HSRF-G03



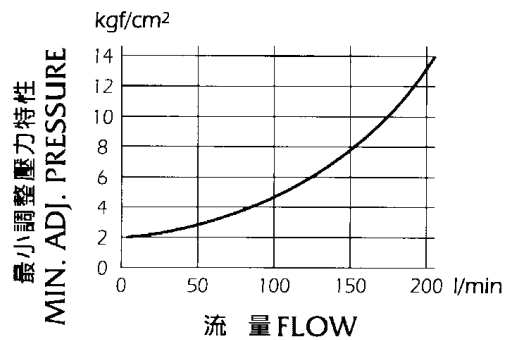
HRF - G06 · HSRF-G06



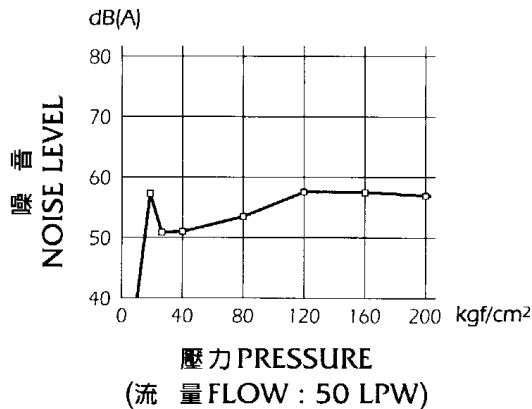
HRF - G03 · HSRF-G03



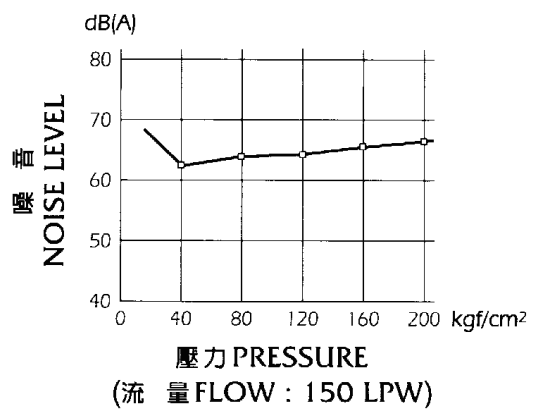
HRF - G06 · HSRF-G06



HRF - G03 · HSRF-G03

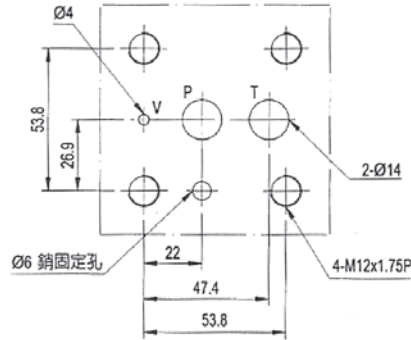


HRF - G06 · HSRF-G06

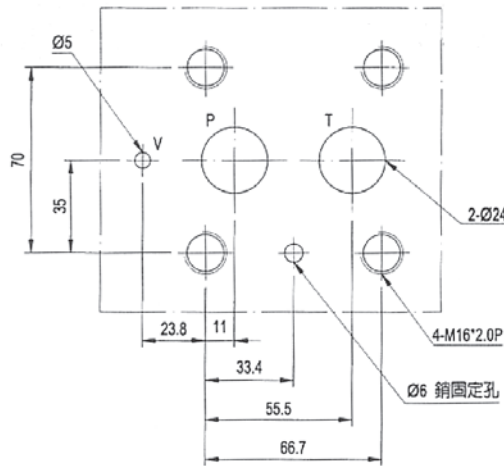


安裝尺寸 INSTALLATION DIMENSIONS

HSRF - G03



HSRF - G06



HSRF - G10

