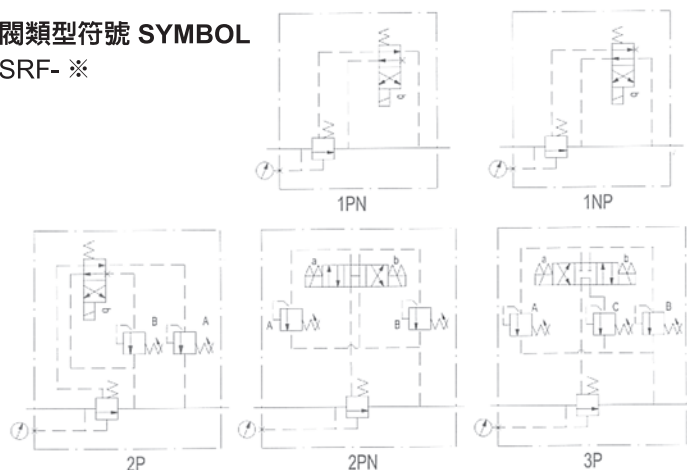


閥類型符號 SYMBOL

SRF- ※



規格說明 SPECIFICATION

型式 MODLE	最高使用壓力 MAX. OPERATING PRESSURE (kgf/cm ²)	壓力調整範圍 PRESSURE ADJ. RANGE kgf/cm ²	最大流量 MAX FLOW l/min	重量(不含電磁閥)(kg) WEIGHT (NO CONTAIN ELECTRO MAGNETIC VALVE)				
				TYPE MODEL	1PN	2PN	2P	3P
SRF-G03- ※	250	1 : 7-70 2 : 7-140 3 : 7-210	80	SRF-G03	6.0	8.0	8.0	3P
SRF-G06- ※ SRF-T06- ※			200	SRF-G06	9.4	9.2	9.2	8.2
				SRF-T06	4.9	6.7	6.7	9.4
SRF-T10- ※ SRF-T10- ※			350	SRF-G10	11.5	14	14.1	6.8
				SRF-T10	7.9			14.3

型號說明 HOW TO ORDER :

SRF-G 03-1PN-1-R-A220-10

① ② ③ ④ ⑤ ⑥ ⑦ ⑧

① 電磁控制溢流閥 SOLENOID CONTROL RELIEF VALVE

② 安裝方式 MOUNTING

G : 版式安裝 SUB-PLATE MOUNTING
T : 管式安裝 THREADED CONNECTIONS

③ 閥規格 VAVLE SIZE

03 : 3/8" 06 : 3/4" 10 : 1-1/4"

④ 導閥型式 VAVLE TYPE

1PN : 常開式 NORMALLY VENTED
1NP : 常閉式 ENERGIZED TO VENT

2P : 兩段調整壓力 DAUL PRESSURE ADJUSTING RANGES
2PN : 兩段調整壓力加常開式 DAUL PRESSURE VENT
3P : 三段調整壓力 THREE PRESSURE ADJUSTING RANGES

⑤ 調壓範圍 PERSSURE ADJUSTING RANGE

1 : 7 - 70 kgf/cm² 2 : 7 - 140 kgf/cm²
3 : 7 - 210 kgf/cm²

⑥ 調整把手方向 DIRECTION OF KNOB

R : 右 P 口側標準型 RIGHT (P PORT SIDE STANDARD)
L : 左 T 口側 LEFT (T PORT SIDE)

⑦ 線圈電壓 COIL VOLTAGE

D12 : 12V DC D24 : 24V DC
A110 : 110/60Hz A220 : 220/60Hz A240 : 240/60Hz

⑧ 導閥接線方式 VAVLE DESIGN NUMBER

10 : 帶燈的集中連接盒 WITH LAMP CENTRAL CONNECTION
20 : 插入式接頭帶密封套 PLUG-IN CONNECTION

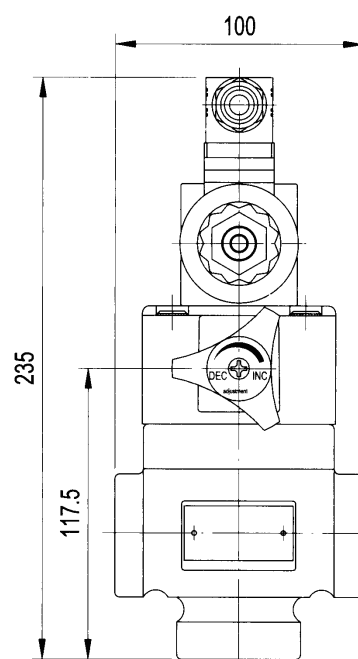
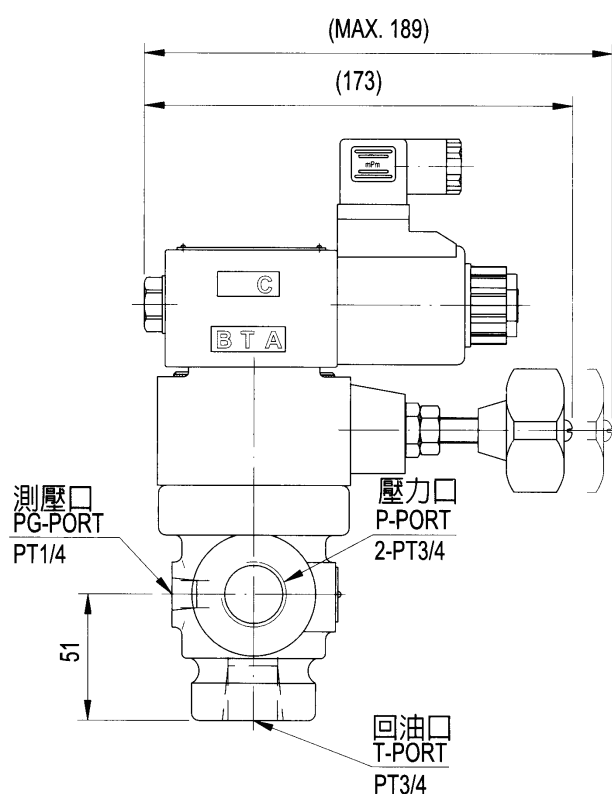
附屬品 ATTACHMENT

型式 MODE	安裝螺絲 SOC HOL CAP SCREW	
SRF-G03	M12 × 75L.....2pcs	M12 × 95L.....2pcs
SRF-G06	M16 × 60L.....2pcs	M16 × 80L.....2pcs
SRF-G10	M20 × 75L.....2pcs	M20 × 95L.....2pcs

SWH-G02 電磁閥重量 SOLENOID WEIGHT(kg)		
	AC	DC
帶一個電磁鐵 Single solenoid valve	1.6	1.7
帶一個電磁鐵 Single solenoid valve	2.1	2.1

安裝尺寸 INSTALLATION DIMENSIONS

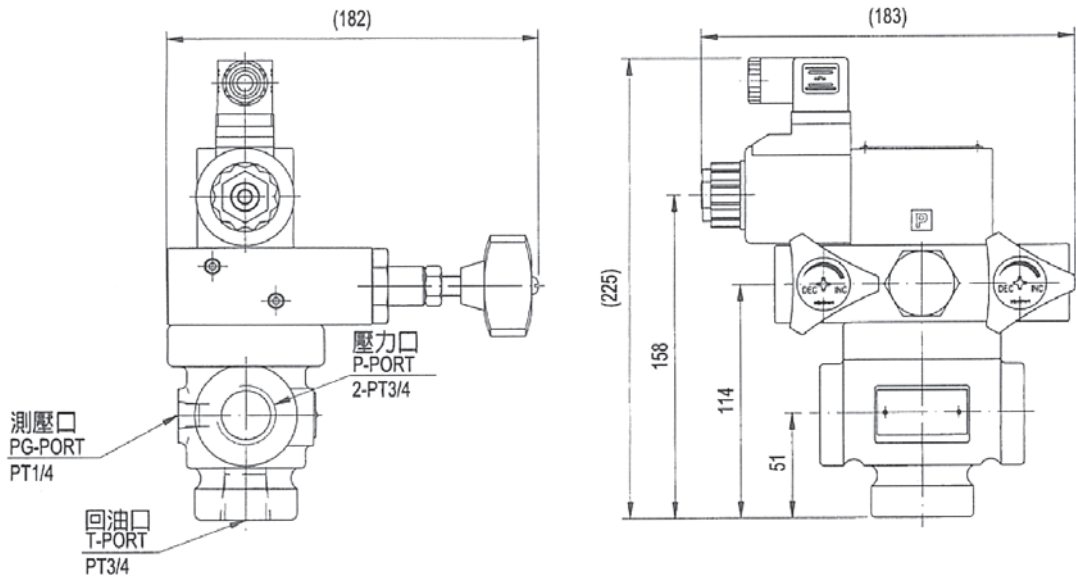
SRF - T06 - 1PN / 1NP



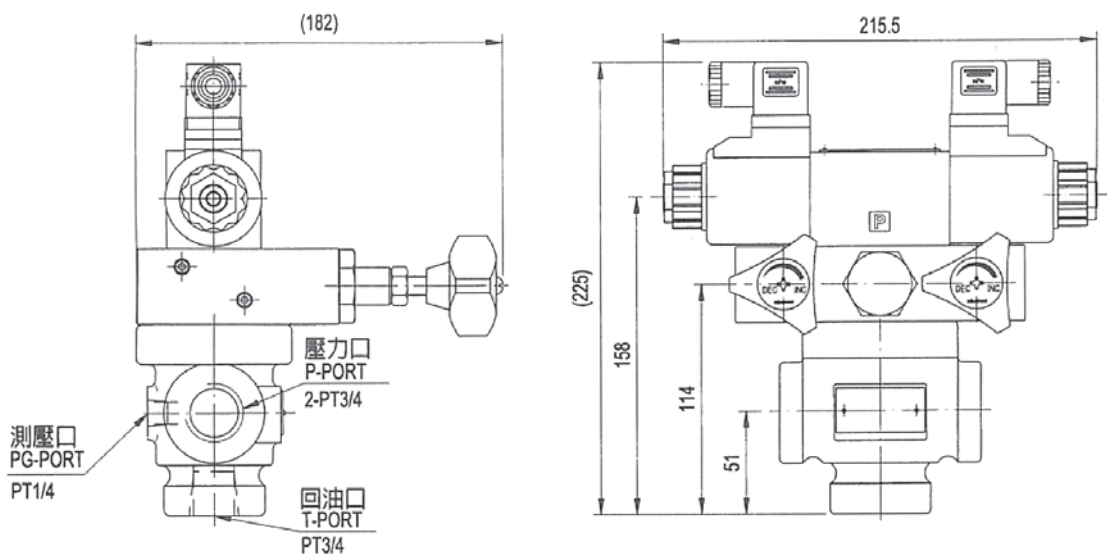
單位 UNIT : mm

安裝尺寸 INSTALLATION DIMENSIONS

SRF - T06 - 2P



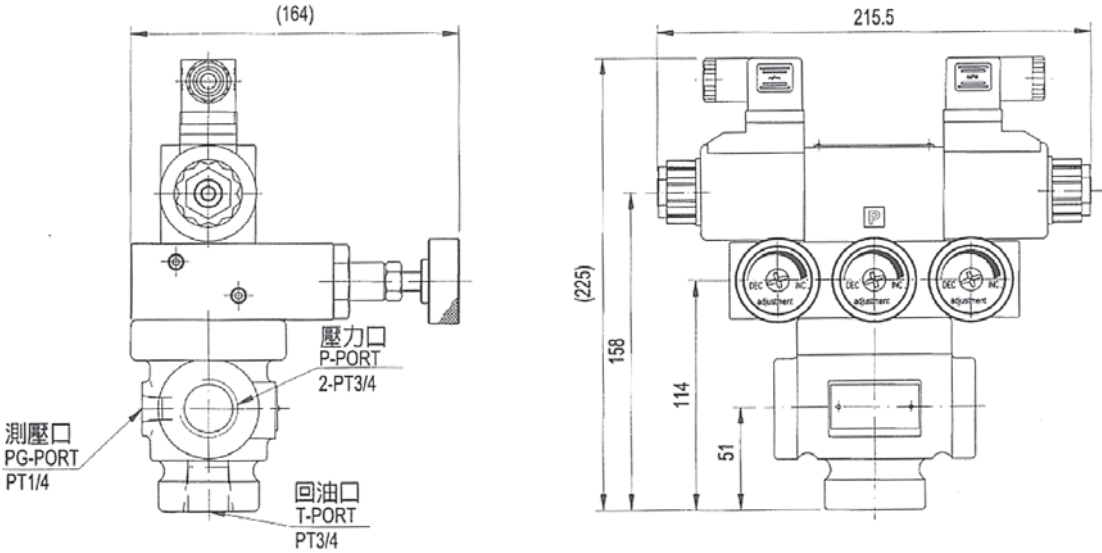
SRF - T06 - 2PN



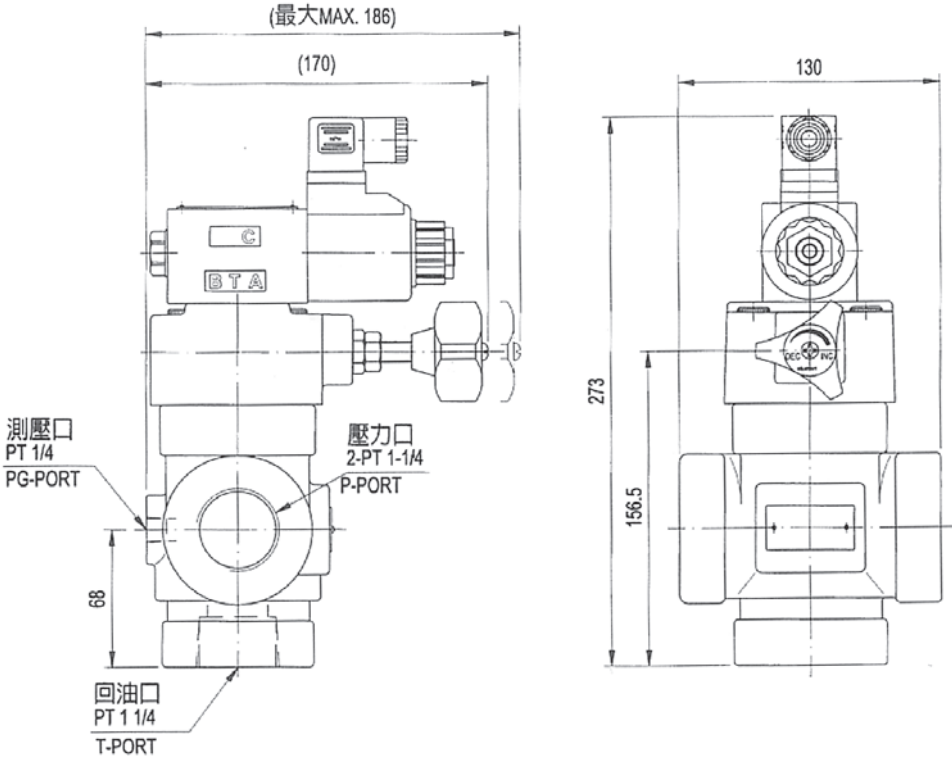
單位 UNIT : mm

安裝尺寸 INSTALLATION DIMENSIONS

SRF - T06 - 3P



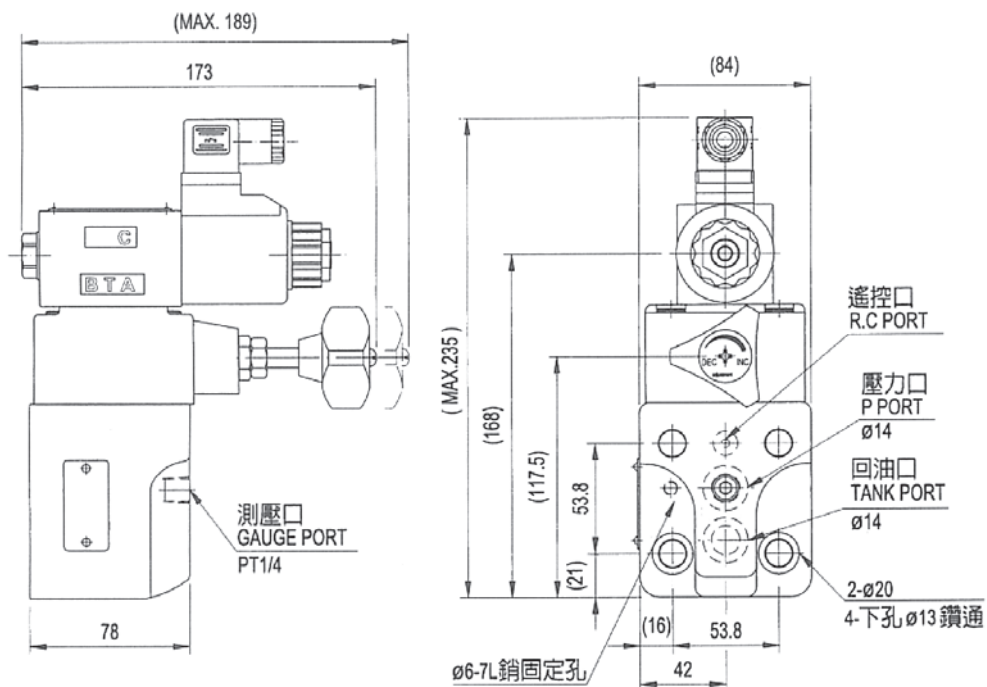
SRF - T10 - 1PN / 1NP



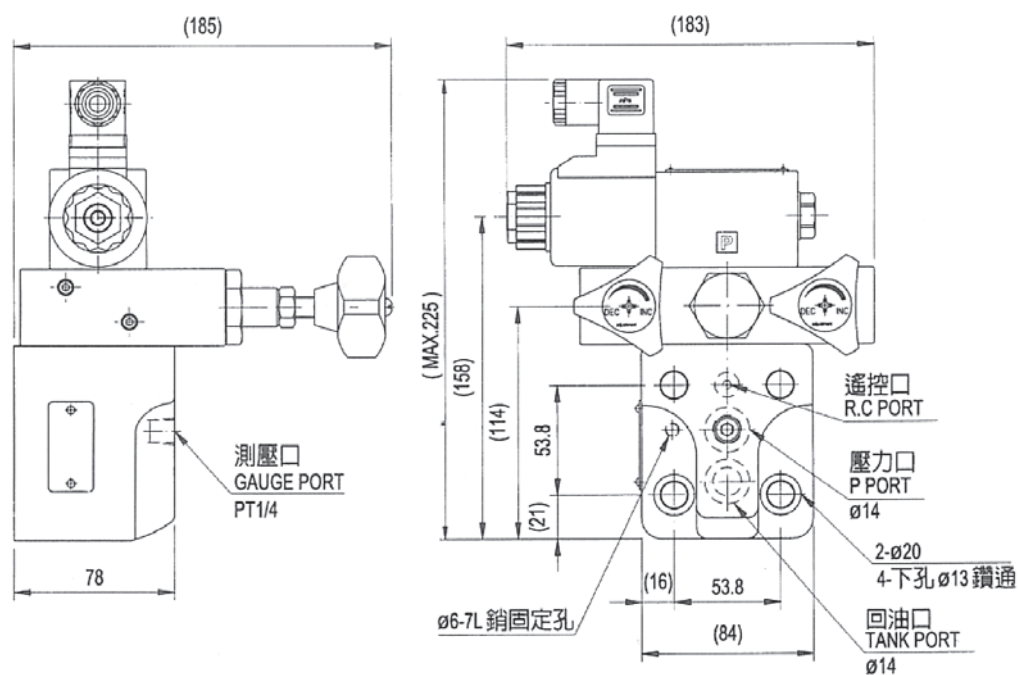
安裝尺寸 INSTALLATION DIMENSIONS

單位 UNIT : mm

SRF - G03 - 1PN / 1NP



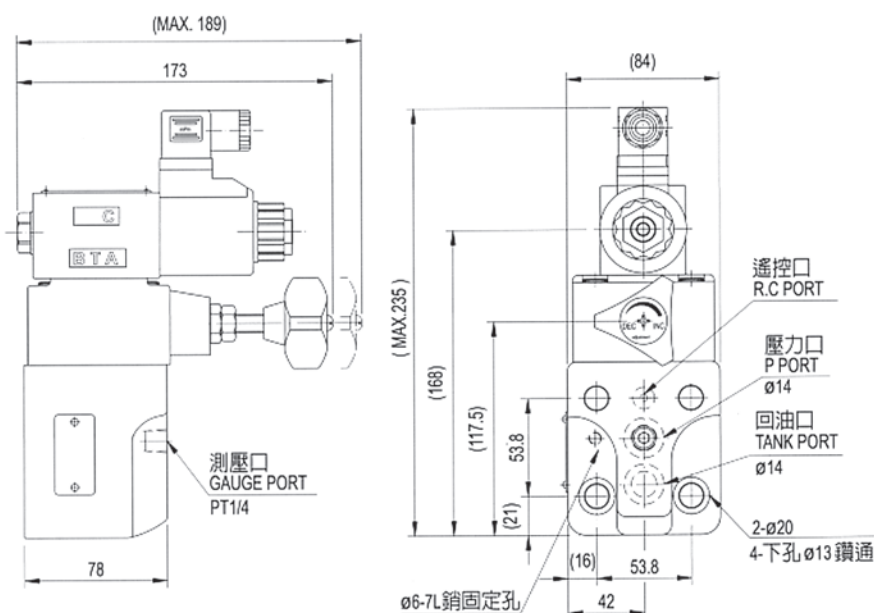
SRF - G03 - 2P



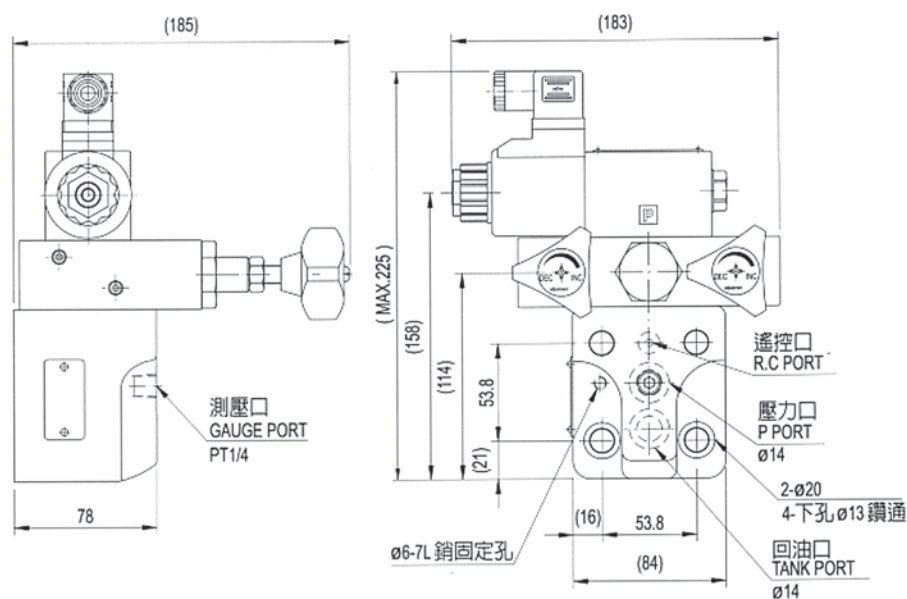
單位UNIT : mm

安裝尺寸 INSTALLATION DIMENSIONS

SRF-G03-2PN

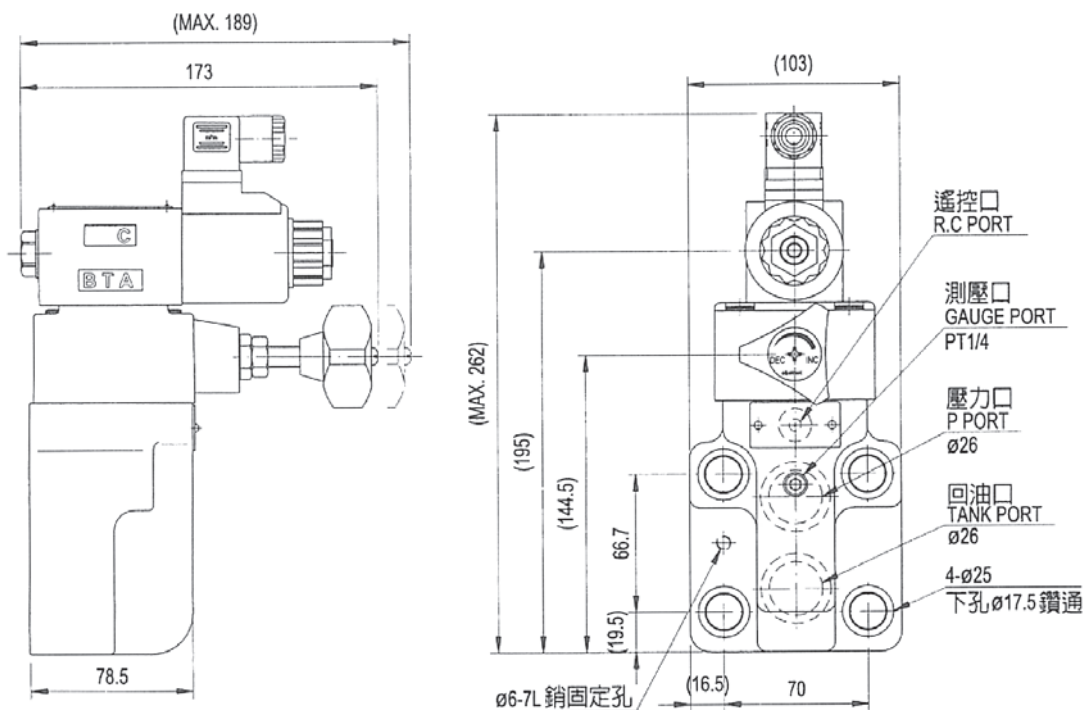


SRF-G03-3P

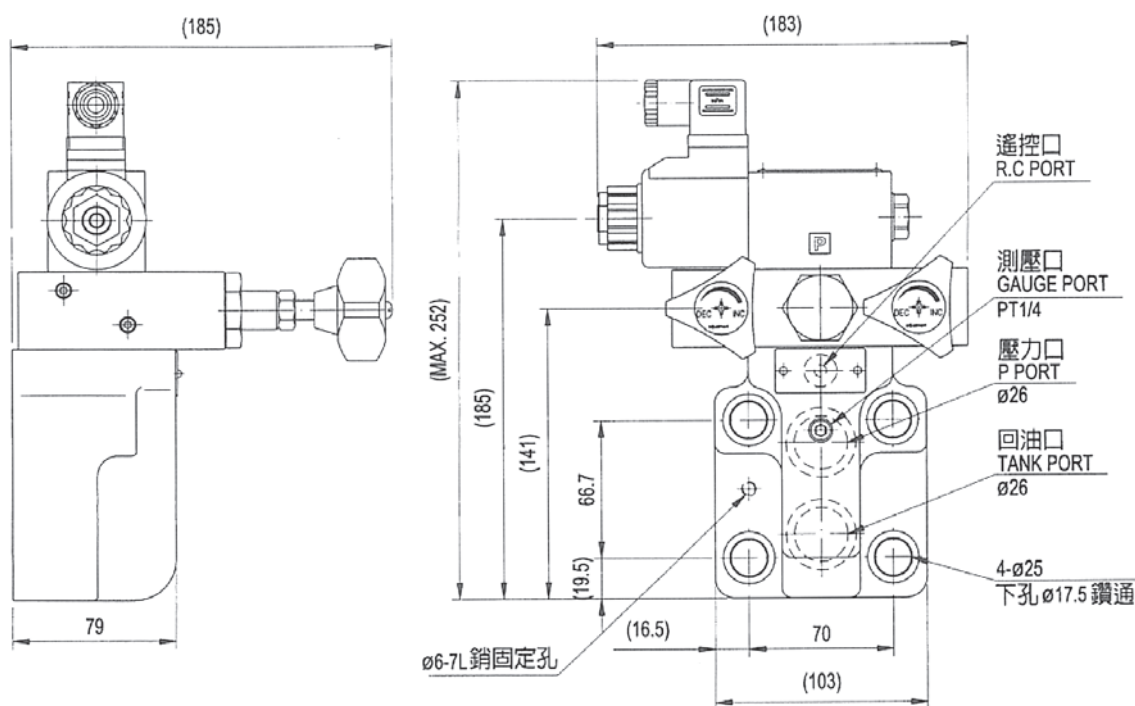


安裝尺寸 INSTALLATION DIMENSIONS

SRF - G06 - 1PN / 1NP

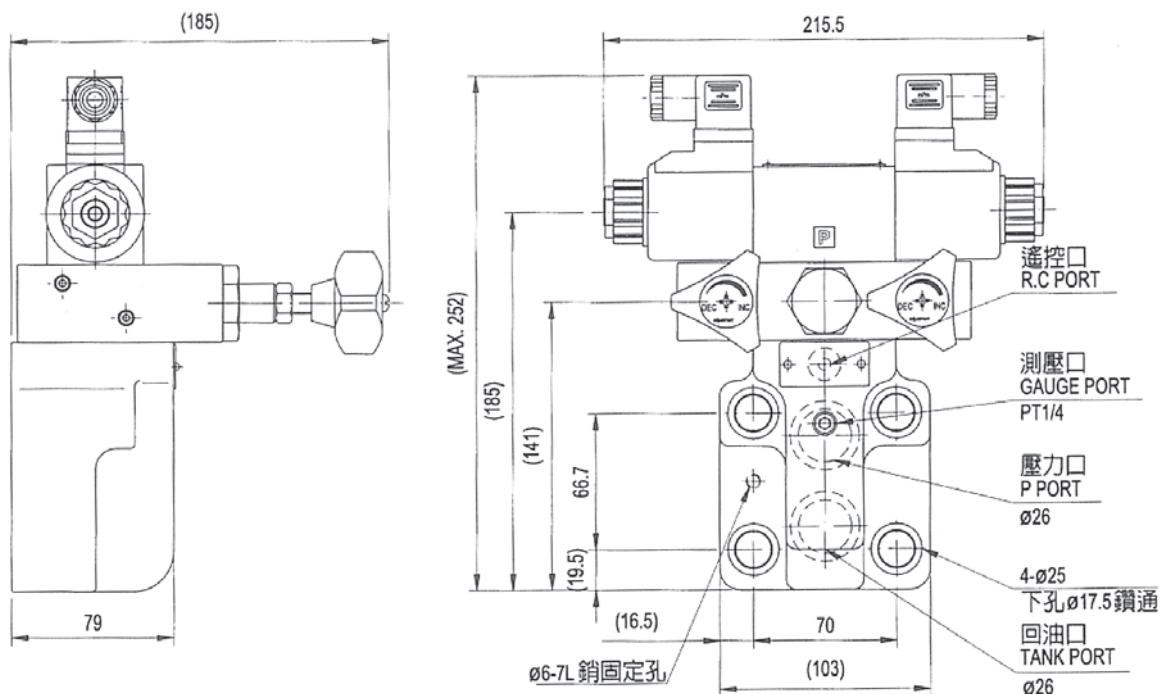


SRF - G06 - 2P

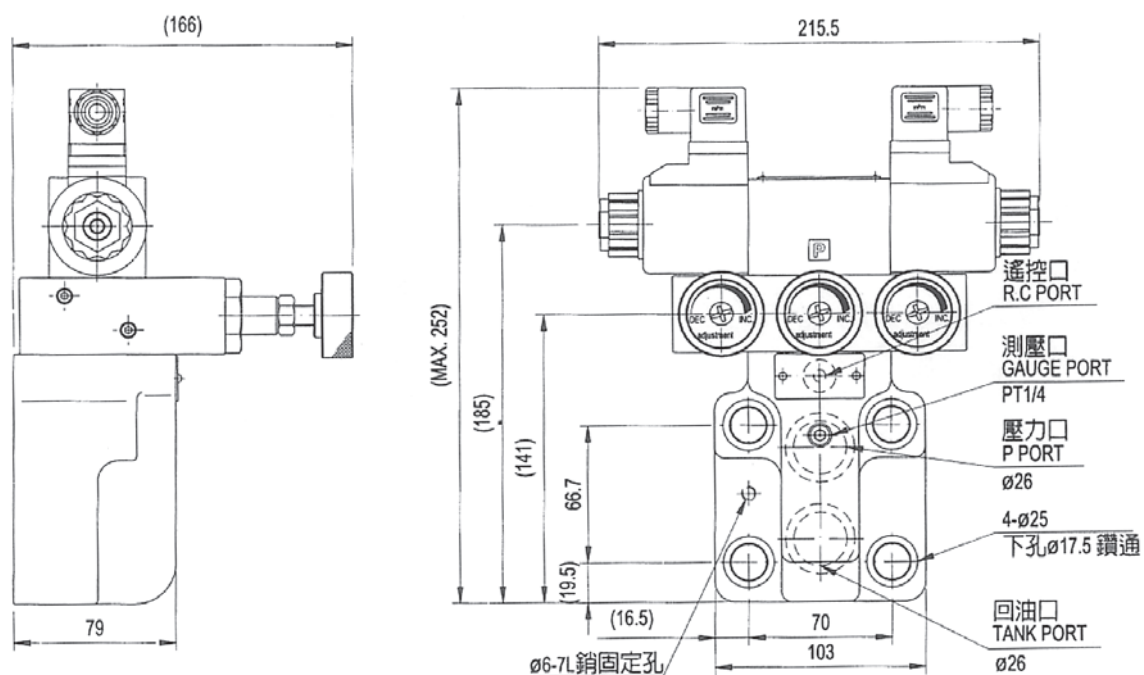


安裝尺寸 INSTALLATION DIMENSIONS

SRF - G06 - 2PN

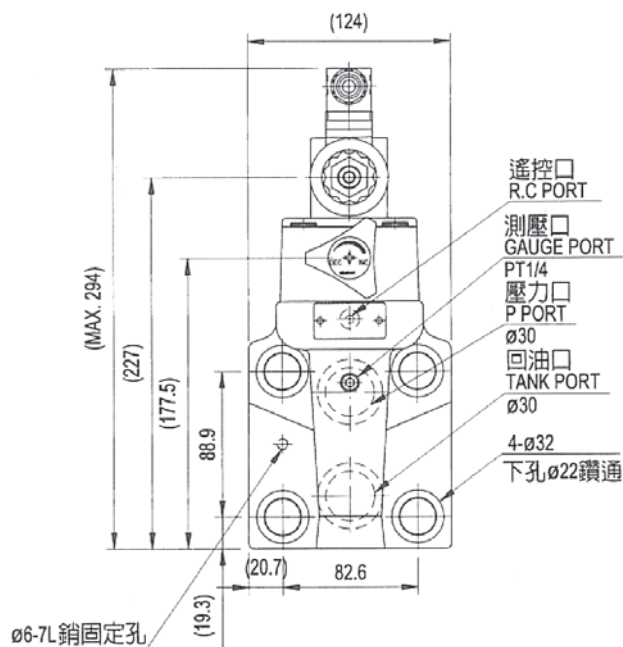
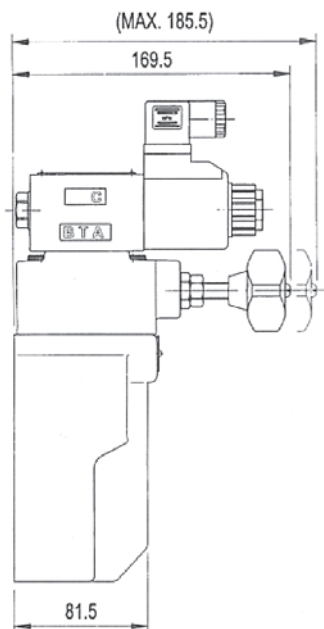


SRF - G06 - 3P

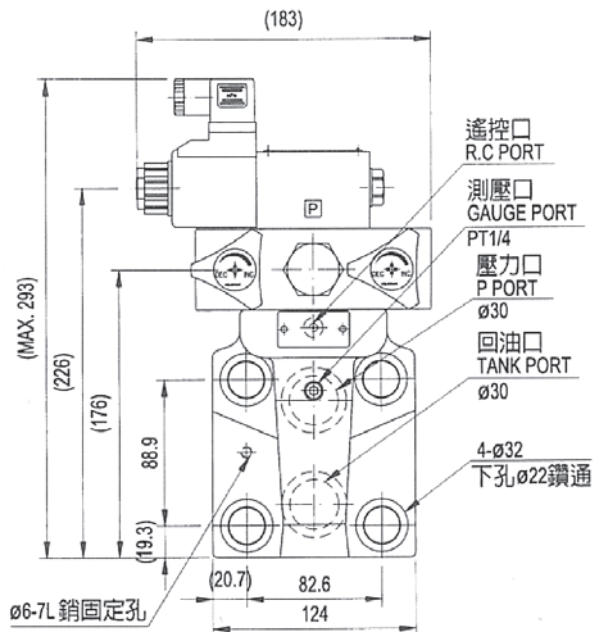
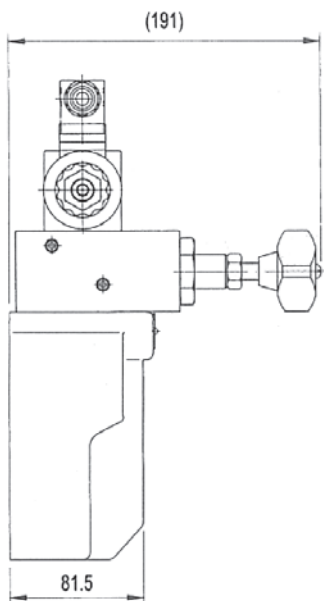


安裝尺寸 INSTALLATION DIMENSIONS

SRF - G10 - 1PN / 1NP



SRF - G10 - 2P



安裝尺寸 INSTALLATION DIMENSIONS

安裝尺寸 INSTALLATION DIMENSIONS

Technical drawing of a rectangular plate with the following dimensions and features:

- Overall width: 66.7
- Overall height: 70
- Four circular features (holes) with diameter $\varnothing 5$.
- Two circular features (holes) with diameter $\varnothing 6$, labeled "销固定孔" (Pin mounting hole).
- Two circular features (holes) with diameter $\varnothing 16$, labeled "4-M16*2.0P".
- Two circular features (holes) with diameter $\varnothing 24$, labeled "2- $\varnothing 24$ ".
- Dimensions for hole placement:
 - Horizontal distance from left edge to center of $\varnothing 5$ hole: 23.8
 - Horizontal distance between $\varnothing 5$ holes: 11
 - Horizontal distance from center of $\varnothing 5$ hole to center of $\varnothing 16$ hole: 33.4
 - Horizontal distance from center of $\varnothing 5$ hole to center of $\varnothing 24$ hole: 55.5
 - Horizontal distance from center of $\varnothing 5$ hole to center of $\varnothing 6$ hole: 66.7
 - Vertical distance from top edge to center of $\varnothing 5$ hole: 35
- Labels P, T, and V are present near the holes.

Technical drawing of a rectangular plate with the following dimensions and features:

- Overall width: 88.9
- Overall height: 82.6
- Four circular holes with diameter $\varnothing 6$ (labeled "Ø6 銷固定孔").
- Two larger circular holes with diameter $\varnothing 30$ (labeled "2-Ø30").
- Four mounting holes with diameter $\varnothing 5$ (labeled "Ø5").
- Four mounting holes with diameter $\varnothing 6$ and thread $4-M20 \times 2.5P$ (labeled "4-M20×2.5P").
- Dimensions for hole positions:
 - Horizontal distance from left edge to center of first $\varnothing 6$ hole: 31.8
 - Horizontal distance between centers of first and second $\varnothing 6$ holes: 12.7
 - Horizontal distance from center of second $\varnothing 6$ hole to center of first $\varnothing 30$ hole: 44.5
 - Horizontal distance from center of first $\varnothing 30$ hole to center of second $\varnothing 30$ hole: 76.2
 - Horizontal distance from center of second $\varnothing 30$ hole to right edge: 88.9
 - Vertical distance from top edge to center of first $\varnothing 6$ hole: 41.3
- Labels P, T, and V indicate specific points or features on the drawing.