

基本規格 SPECIFICATIONS

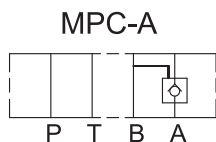
MPC-02 系列 SERIES		
最大工作壓力 Maximum Pressure	bar	210 bar (3000 PSI)
最大流量 Maximum Flow	LPM	45 LPM (11.9 GPM)
重量 Weight	型式 Code: A,B	1.0 Kgs (2.2 Lbs)
	型式 Code: W	1.0 Kgs (2.2 Lbs)
使用油品 Fluid Type		礦物性 耐磨性 Mineral, Anti-Wear
黏度範圍 Viscosity	cST	10-400 cST (59-1854 SSU)
使用溫度 Operating Temperature	°C	-15-70°C (-5-158°F)
清潔度 Contamination Level		NAS 12 級以內 Under NAS Class 12
表面處理 Surface Treatment		磷酸鹽皮膜處理 Zinc Phosphate Compound

型號說明 HOW TO ORDER

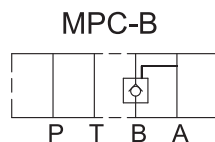
MPC - 02 W - 30

① ② ③ ④

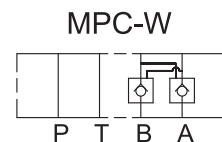
- ① 閥系列 Valve Series
 MPC = 疊加式導引止逆閥
 Modular Pilot Check Valve
- ② 通稱口徑 Subplate Mounting Size
 02 = 通稱 Nominal 1 / 4" (6mm)
 ISO CETOP3
 DIN NG6
 NFPA D03
- ③ 控制迴路 Control Port



A 迴路控制
(A Port Only)



B 迴路控制
(B Port Only)



A 與 B 迴路控制
(A&B Port)

- ④ 設計型號 Design No.

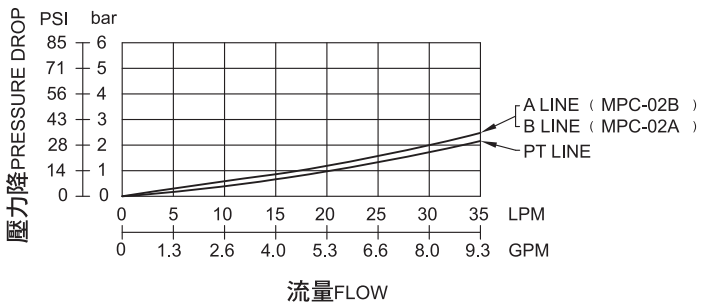
特性曲線 PERFORMANCE

測試條件 Test Conditions

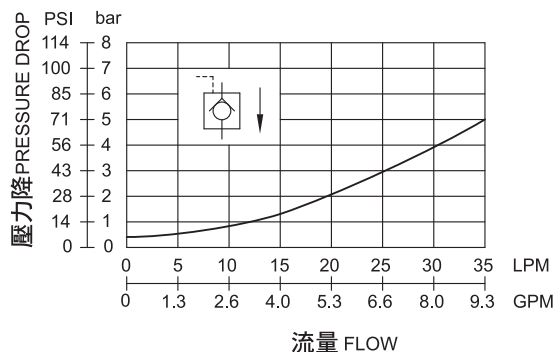
溫度 Oil Temperature: 50°C (122 °F)

黏度 Viscosity: 35cST (163 SSU)

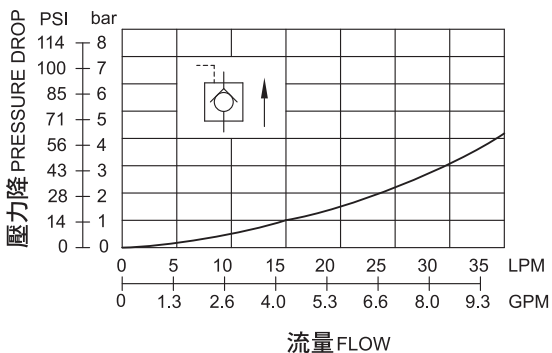
壓力降特性曲線 (自由流) PRESSURE DROP FREE FLOW



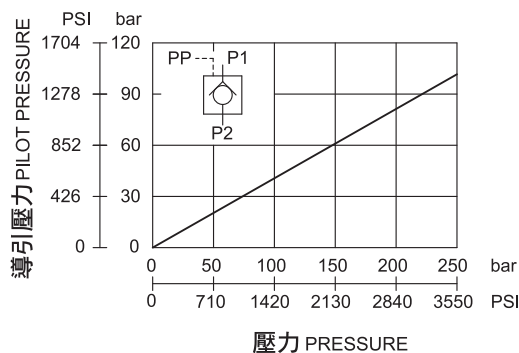
壓力降特性曲線 (逆自由流) PRESSURE DROP (REVERSE CONTROLLED FLOW)



壓力降特性 (逆自由流) PRESSURE DROP (REVERSE CONTROLLED FLOW)

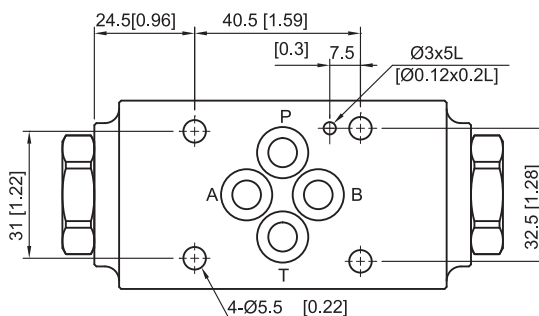
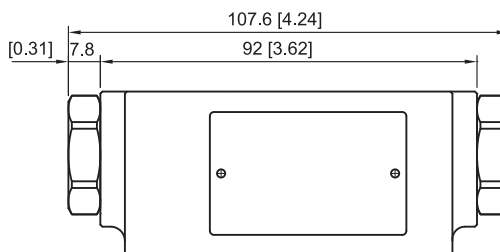
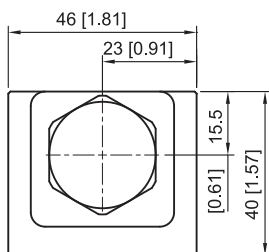


最低先導壓力特性 MINIMUM PILOT PRESSURE



外型尺寸 DIMENSIONS

MPC-02W / A / B -30

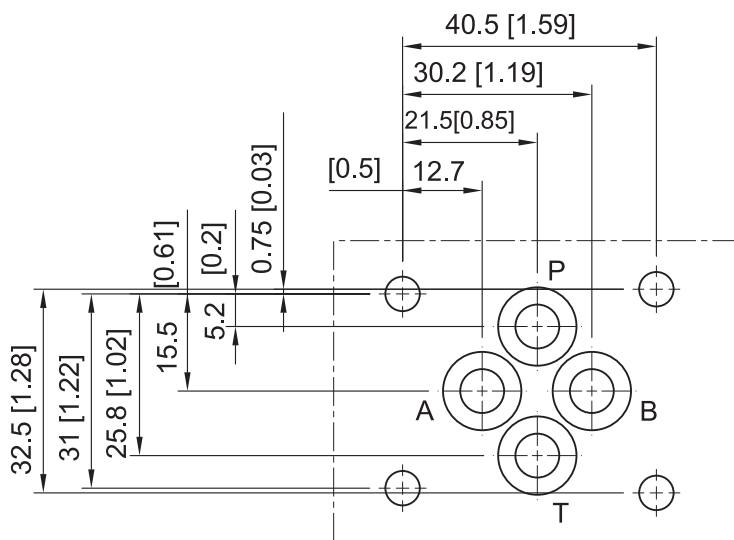


安裝面

Mounting Interface:
 ISO 4401-AB-03-4-A

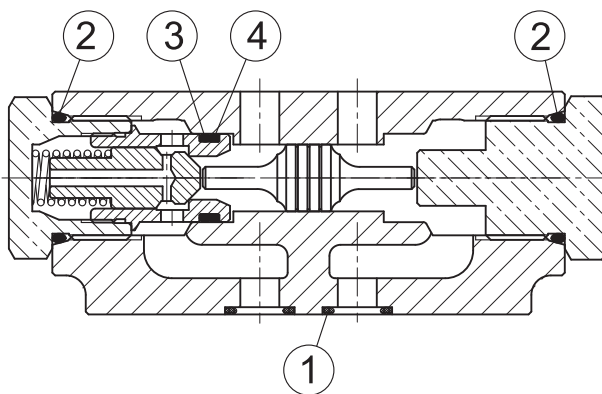
安裝面 MOUNTING INTERFACE

ISO 4401-AB-03-4-A

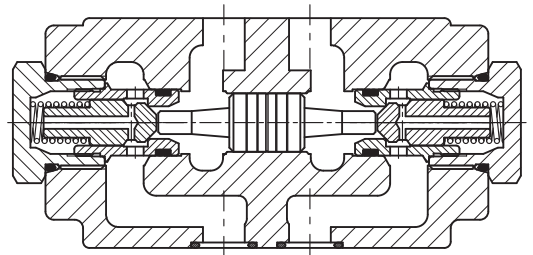


密封件 SEAL KITS

MPC-02W / A / B -30



NO.	種類 Description	型號 Specification	數量Q'ty	
			A / B	W
1	O 型環 O-ring	AS568-012 HS90°	4	4
2	O 型環 O-ring	P-20 HS70°	2	2
3	O 型環 O-ring	AS568-014 HS90°	1	2
4	背托環 Back-up Ring	AS568-014 橡膠	1	2



基本規格 SPECIFICATIONS

MPC-03 系列 SERIES			
最大工作壓力 Maximum Pressure	bar		210 bar (3000 PSI)
最大流量 Maximum Flow	LPM		70 LPM (18.5 GPM)
重量 Weight	型式 Code: A,B	Kgs	3.4 Kgs (7.5 Lbs)
	型式 Code: W	Kgs	3.4 Kgs (7.5 Lbs)
使用油品 Fluid Type			礦物性 耐磨性 Mineral, Anti-Wear
黏度範圍 Viscosity	cST		10-400 cST (59-1854 SSU)
使用溫度 Operating Temperature	°C		-15-70°C (-5-158°F)
清潔度 Contamination Level			NAS 12 級以內 Under NAS Class 12
表面處理 Surface Treatment			磷酸鹽皮膜處理 Zinc Phosphate Compound

型號說明 HOW TO ORDER

MPC - 03 W - 40

① ② ③ ④

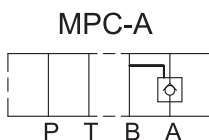
① 閥系列 Valve Series

MPC = 疊加式導引止逆閥
 Modular Pilot Check Valve

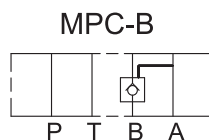
② 通稱口徑 Subplate Mounting Size

03 = 通稱 Nominal 3 / 8" (9mm)
 ISO CETOP5
 DIN NG10
 NFPA D05

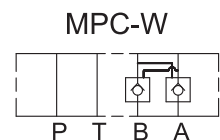
③ 控制迴路 Control Port



A 迴路控制
 (A Port Only)



B 迴路控制
 (B Port Only)



A 與 B 迴路控制
 (A&B Port)

④ 設計型號 Design No.

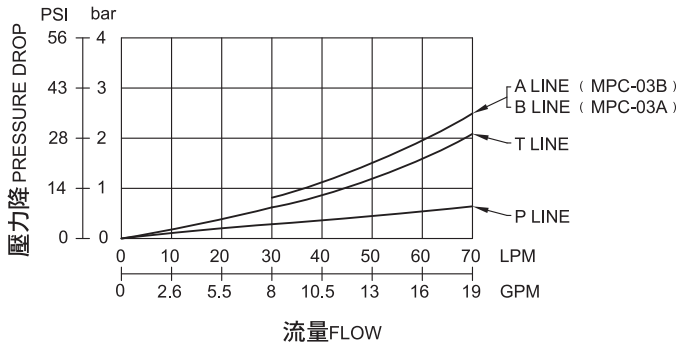
特性曲線 PERFORMANCE

測試條件 Test Conditions

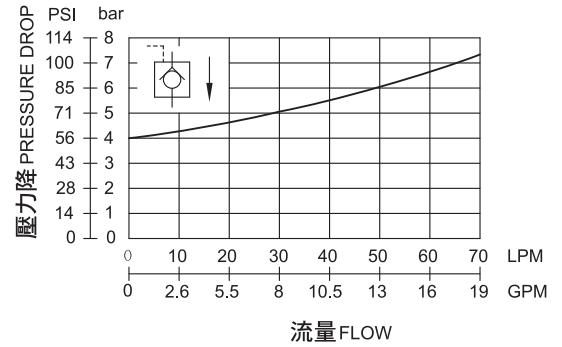
溫度 Oil Temperature: 50°C (122 °F)

黏度 Viscosity: 35cST (163 SSU)

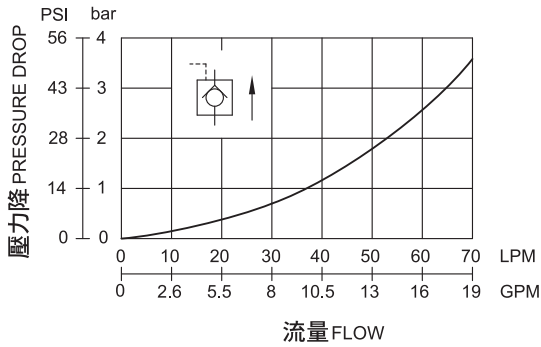
壓力降特性曲線 PRESSURE DROP



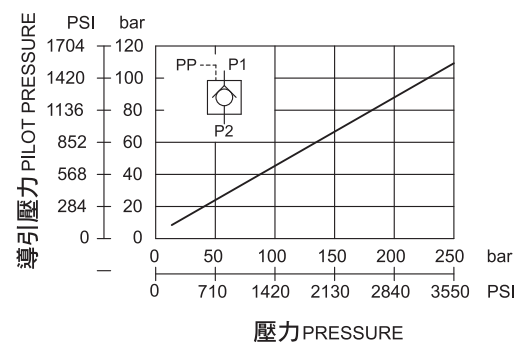
壓力降特性曲線 (自由流) PRESSURE DROP (FREE FLOW)



壓力降特性 (逆自由流) PRESSURE DROP (REVERSE CONTROLLED FLOW)

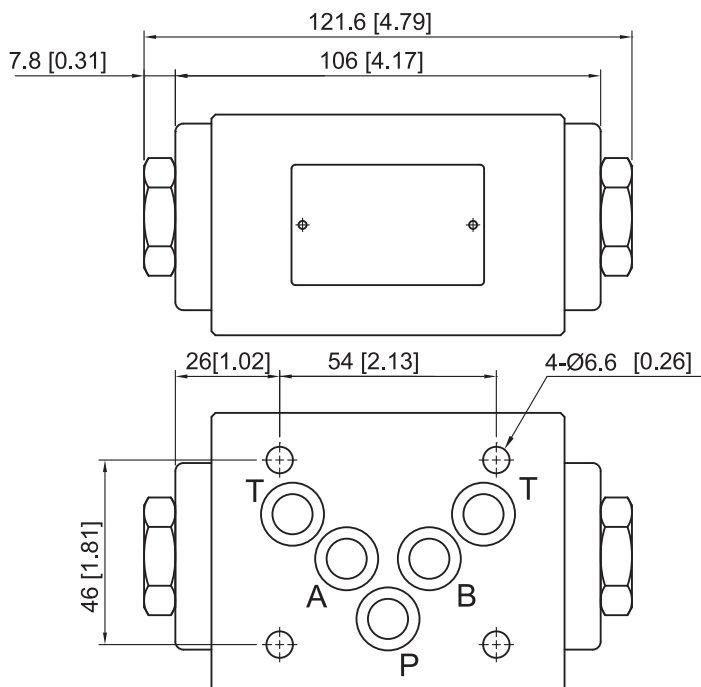


最低先導壓力特性 MINIMUM PILOT PRESSURE



外型尺寸 DIMENSIONS

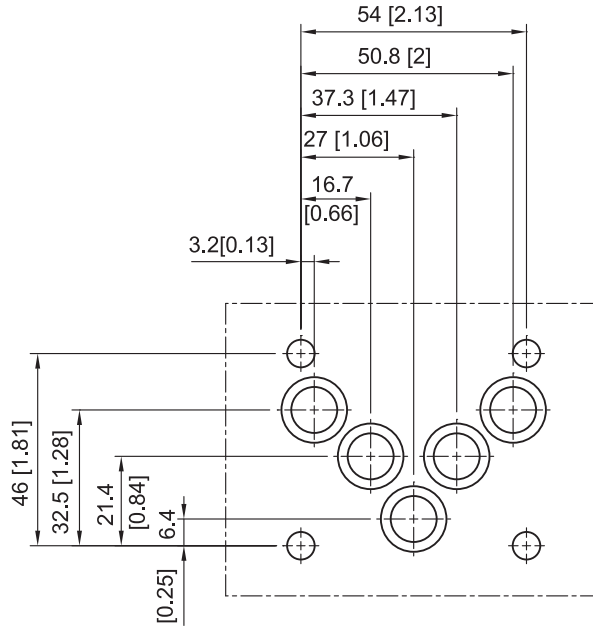
MPC-03W / A / B-40



安裝面
 Mounting Interface:
 ISO 4401-AC-05-4-A

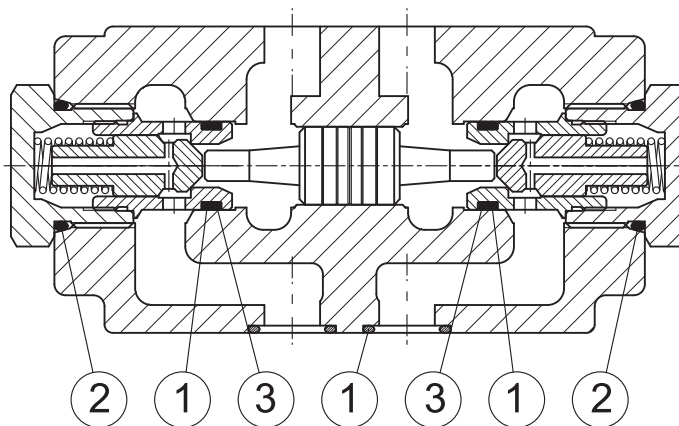
安裝面 MOUNTING INTERFACE

ISO 4401-AC-05-4-A



密封件 SEAL KITS

MPC-03W / A / B -40



NO.	種類 Description	型號 Specification	數量 Q'ty	
			A / B	W
1	O 型環 O-ring	AS568-014 HS90°	6	7
2	O 型環 O-ring	P-20 HS70°	2	2
3	背托環 Back-up RING	AS568-014 橡膠	1	2